

Lower Your Risk of Breast Cancer



K-State wants Kansans to know that some risk factors for breast cancer are controllable. The Johnson Cancer Research Center and K-State Research and Extension provide evidence-based information in their new "Lower Your Risk of Breast Cancer" brochure. It explains how to reduce the risk of developing or dying from breast cancer. It can be downloaded from the [JCRC website](#) and printed copies can be ordered from the [KSRE bookstore](#).

K·STATE
Research and Extension

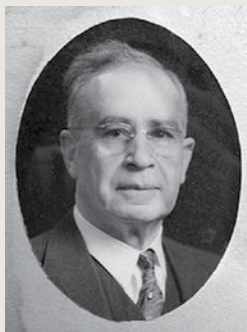
KANSAS STATE
UNIVERSITY
Johnson Cancer Research Center

Kansas State University Agricultural Experiment Station and Extension Service

Leaving a legacy

Flossie E. West Trust creates new paths for breast cancer research and honors namesake

By Dalton Burton



Lyman West

Getting a cancer diagnosis is news no person wants to receive. The physical and mental pain that goes along with a cancer diagnosis can be a brutal burden for anyone to bear. Cancer does not discriminate. It affects millions of men, women and children worldwide and remains at the forefront of the medical industry's research priorities.

The Flossie E. West Trust of Augusta, Kansas, was established in the 1960s by Lyman West, the widower of Flossie, to create funds that support

finding new treatments for breast cancer, which Flossie had. To date, the Flossie West Trust has given \$656,000 to the Johnson Cancer Research Center of Kansas State University.

"The Flossie West Memorial Trust was set up in the '60s to fund cancer research after Flossie West died of cancer," said Dave Bisango, K-State alumnus and one of the three trustees managing the trust. "Each year, the trustees provide grant research funding and evaluate the effectiveness of the research that is done throughout the year. We have been very pleased with the results of the research through Kansas State University."

The trust is currently supporting the groundbreaking research of Anna Zolkiewska, professor of biochemistry and molecular biophysics. Her team studies breast tumor-infiltrating immune cells and how they help destroy breast cancer cells. They hope their findings will not only advance breast cancer research but also provide new and innovative therapeutic treatment options to patients.

"A cancer patient's own immune system can be the most powerful weapon to fight the disease," Zolkiewska said. "New approaches to boost anti-tumor immunity are effective in treating several types of cancer, but these immunotherapies have been less successful in

Every gift helps, and generally more than **95%** of gifts are less than **\$1,000**.

breast cancer. We are working to understand why so many breast tumors do not readily respond to immunotherapies and to develop better immunotherapies."

Currently, Zolkiewska and her fellow researchers are focused on applying to the National Institutes of Health's National Cancer Institute for an even larger grant to continue their research.

"Without the help of the Flossie West Trust, it would be very difficult to even consider accomplishing this goal," Zolkiewska said. "The Flossie West Trust has been vital in providing us with the tools necessary to continue our research and reach for higher goals."

Coupled with the research is a desire to help people and rid the world of a disease that takes an awful toll.

"The main reason behind the Flossie West Trust is to honor her legacy, and the best way we can do that is to continue funding this great research in hope of eliminating breast cancer once and for all," Bisango said. "The reason why I and my fellow trustees got into this wasn't for the recognition; it was to honor Flossie's legacy and let others who are in a similar situation know they are not alone."

Philanthropic support is making a difference now and well into the future. Much of the support for the Johnson Cancer Research Center comes from privately donated funds to support about 90 K-State cancer research teams. This funding often provides the leverage needed to win larger grants that will provide dividends over the years in K-State's fight against cancer.



Anna Zolkiewska